



CW-FIT NEWSLETTER



WHAT'S NEW

CW-FIT COMPLETES THE FIRST YEAR OF RURAL PILOT STUDY

CW-FIT has expanded to rural school districts and successfully completed the first year of the pilot study. We are excited to apply feedback from our pilot participants to make the first study year even better! Are you a rural educator in one of these states? (CA, TX, TN, KS, NY, MT, MN) Email us at cwfitku@ku.edu to learn about upcoming opportunities.

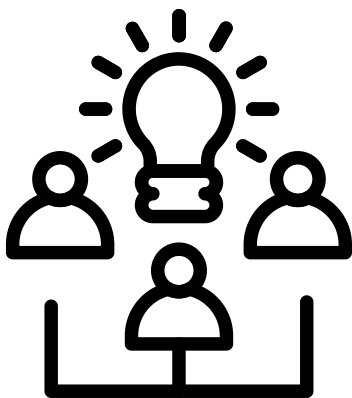
MOUNT DIABLO USD COMPLETES THREE YEARS OF CW-FIT RESEARCH

Mount Diablo USD successfully concludes its impactful three-year research collaboration with CW-FIT. With the invaluable support of our dedicated National Trainers, the district is now equipped with the necessary resources to effectively train, support, and maintain the implementation of CW-FIT in the years ahead.

CW-FIT PRESENTED AT 8 CONFERENCES DURING THE 2023 ACADEMIC YEAR

Thank you to everyone who supported our dissemination efforts at various conferences this past school year. Stay tuned for upcoming presentations highlighted in our Newsletters!

CONFERENCES



TREA -Roundrock, Texas June 23rd-26th

Behavior Support for All Students: Class-Wide FIT on June 25th from 10:50-11:20

<https://www.txrea.com/conference>

RSA Summer Conference - Lake Placid, NY July 14th-16th

<https://registration.socio.events/e/miracleofruraleducation>

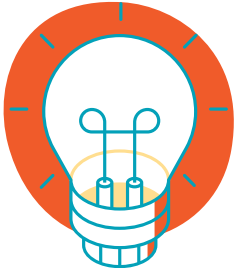
Stop by our table to learn about CW-FIT and upcoming research opportunities.



CW-FIT NEWSLETTER



PUBLICATIONS




The CW-FIT Team and West Ed recently completed a Meta Analysis on CW-FIT publications. Be sure to see what's new in recent publications on our website! [Click Here](#)

SHARE YOUR EXPERIENCE

Have you implemented or supported the implementation of CW-FIT? Use the link or QR code below to share your experience and be featured in future newsletters. [Click Here](#)





What do teachers & students say about CW-FIT

"It helped me stay focused and keep my grades up."
-Student A

"I LOVE this program! I did not know what to think before I tried it, but it ended up being an incredible tool."
-Teacher 1

"I use CW-FIT in my classroom and it allows us to have fun while still meeting those class expectations. This is my go-to classroom management strategy. I love it and my kids love it too!"
-Teacher 2

"I enjoy CW-FIT because we get to do lots of fun things and it makes my day a bit better."
-Student B

cwfit.ku.edu

Let's Be Social!

@CW_FIT_KU